

The Greater West - Wales Electrification

Safety, Health & Environmental Bulletin

Number 202

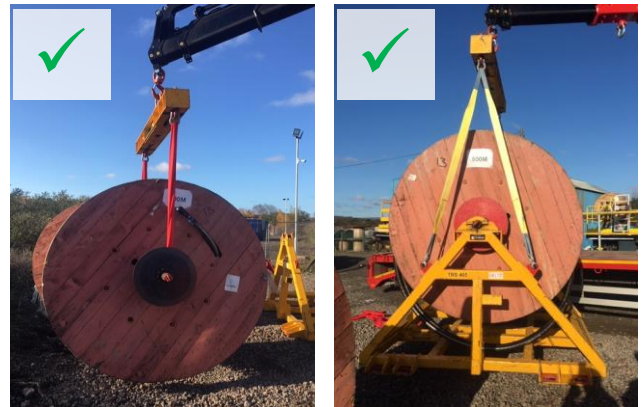
Nov 2019

Lifting of Cable De-Coiler & Cable Drums

Over recent weeks, we have seen an increase in issues with regards to the loading and unloading of Cable De-Coiler (A-Frames) and Cable Drums at site access locations and within materials holding compounds where lifting operations have come in to contact with overhead obstructions.

During investigation it was identified that one of the contributing factors was poor slinging arrangement of the load due to inappropriate equipment (slings too long) being used to enable works to be undertaken correctly.

- The slings being used were of excessive length resulting in a greater lifting hook height being required to achieve the planned lifts.
- The incorrect lifting points (not shown) were also being used which increased the lifting hook height even further.
- The load was being lifted without use of the correct beam increasing the risk of damage to drums.



Considerations:

- When planning works always ensure that staff select the most suitable equipment for the planned task, when hiring plant and/or attachments from a supplier always ensure any ancillary equipment required to operate/load/unload is also supplied to ensure correct use/operation.
- Always check that all staff have the relevant experience in the activities associated with the equipment's use.
- For all lifting operations a valid lifting plan must always be in place and adhered to. All slung loads are deemed intermediate lifts & must have a specific lift plan. You **MUST NOT** use the telehandler generic schedule of lifts.
- All documented/identified risks and controls must be briefed to all involved in the task and required controls implemented prior to start.
- Where Telehandlers are to be used for underslung loads always ensure the correct attachment is used and the operator holds valid competence for this method as this is usually an addition to basic Telehandler competence.
- All slinging arrangements for lifting of loads must be kept as short as possible ensuring maximum achievable clearance to overhead obstructions.
- All plant operations are executed utilising full duplex (DECT) communications as mandated on the TGW project.
- The person controlling the operation must exclude all non-essential personnel from areas of lifting activity and the exclusion zone maintained at all times.
- All Managers/Supervisors must check all certification, plans, permits, PPE etc. is correct for the task and in date.
- No works shall proceed unless all that is required for the safe control and operation is made available.
- All plant and machinery movements must be controlled by a fully certified Banksman/MC and all lifting activities controlled by fully certified Slinger/CC, **NO EXCEPTIONS!**

Author:	Neil Edwards	POS/ALO Assurance Manager
Authorised by:	Tommy Cooper	HSES Project Partner